



Winter work has started early with this clearance work along the footpath between Hydehurst Lane and Fleming Way.



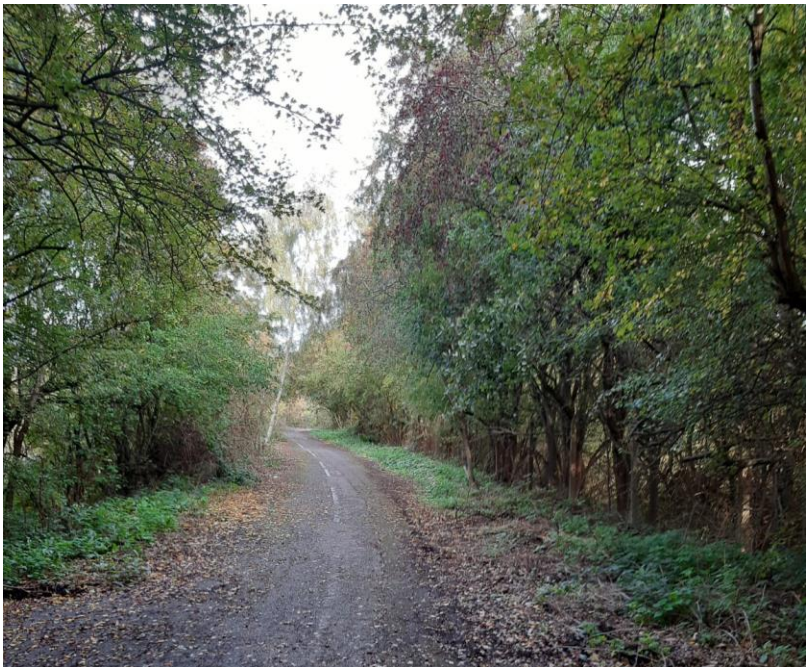
Public/cyclists are now able to access this footpath without any obstacles in the way.



Our team has removed 230kg of green waste from this area, weeds have also been sprayed to prevent any continuous growth. We will be able to keep this footpath under control and clear of overgrown shrubs/detritus.



Here are the before photo of a large task we took on in Tinsley Lane North, clearing a very overgrown and neglected footpath.



With the support from our small works team we able to use a machine called an Avant to help clear the footpath. The detritus that was cleared from here was reused to create a bunding along the side of this footpath to help prevent weed growth, which will be easier to maintain. With a very satisfying end result, it turns out this area is actually the old Gatwick Road.



Location: Tinsley Lane North



We experienced some vandalism within The Terrace where screws and wood were removed from seats. These have now been repaired by our team.



We have also had a lot of graffiti in The Terrace, which has now been removed, however some areas will need to be repaired due to scratching of the paintwork. This area will be monitored frequently and MR Rangers will be updated on this area.

During the summer we came across these self seeded shrubs which had forced their way through the pathway, leaving very dangerous trip hazards.
WSCC were contacted and have since been out to remove the growth and repair the footpath, leaving this area now safe to the public.



Location: Gatwick
Road

